



EVERSHINE ENTERPRISES

COMPLETE SCAFFOLDING SOLUTION



EVERSHINE
ENTERPRISES
COMPLETE SCAFFOLDING SOLUTION

ABOUT OUR COMPANY

We have about 25 years experience in the field of steel scaffolding and formwork. We have design based turnkey solutions and services for various structures with CAD. In addition to this, we can also give consultancy and provide computerized erection drawings as per the specific requirement of our clients.

We are one of the prominent manufacturer and supplier of steel scaffolding and shuttering materials to most of the major construction companies all over India. Manufactured in tandem with the defined industry standards, our products are available in various specifications used in the construction of Dams, Large industrial establishments, Power stations, Ports, Bridges and Flyovers etc.

QUALITY

We are registered with ISO 9001:2015. All our products are manufactured under strict quality norms in the supervision of experienced staff at different stages of production to ensure quality product. Quality of our material is best available in the market. Beside standard material, we manufacture special product based on our customer's requirement.

We always dispatch / deliver material on time as per commitment so that work doesn't get suffered at site.

We always offer : **"Best Priced – Quality Material – On Time"**

The goal of the company is to achieve a high level of customer satisfaction at all times.

Besides manufacturing and supplying quality scaffolding and shuttering material, we offer following services :

- # Scaffolding on HIRE.
- # Erection and dismantling of scaffolding.
- # Industrial steel sheds.
- # Fabrication and erection of steel structure at project site(s).
- # Safety items.

Further, you may also visit our **website "evershineenterprises.in"**





Adjustable Base Jacks and Stirrup Heads are used to adjust the height and level of the Scaffolding to make it more flexible with the surface of the ground.



ADJUSTABLE BASE JACK

Rod 32 / 36 Dia OD, 250/350/450mm Adj.
Base / Head Plate 150x150x5/6mm
Malleable Cast Iron Nut



ADJUSTABLE STIRRUP HEAD (U-JACK)

Rod 32 / 36 Dia OD, 250/350/450mm Adj.
U Head 75x100x75mm etc.
Malleable Cast Iron Nut



ADJUSTABLE HOLLOW JACK
38 Dia



FORK HEAD



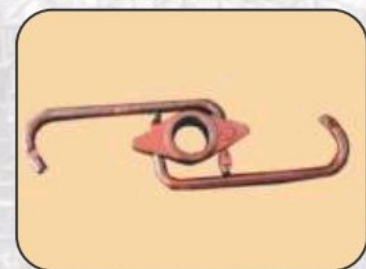
UNIVERSAL HOLLOW JACK
38 Dia OD



ROCKING BASE PLATE



JACK NUT



SPINDLE NUT



Props are the compression members used as temporary supports for Building and civil Engineering works. Props Provide the ideal and the most economic methods of Support for all kind of Formwork, Slabs, Beams, Wall & Columns.

SPECIFICATION

Props are made from continuous welded steel tubes

Outer: 60.30 OD, B/C Class

Inner: 48.30 OD, B/C Class

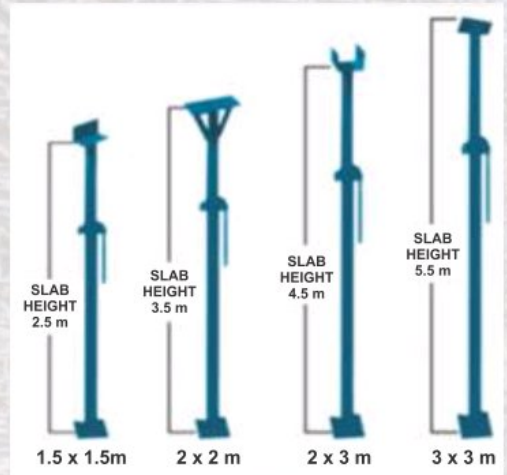
Base/Top Plate : 150x150x6mm

Nut : Heavy Duty Malleable Cast Iron Nut

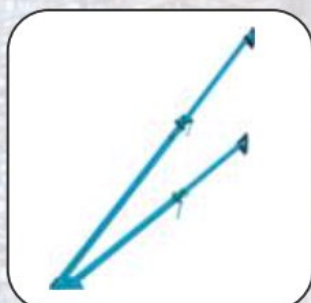
Conventional Props

Designation	Adjustment (In Meters)		Safe Axial Load (kg)	
Prop.	Closed	Extended	Closed	Extended
0 M	1.10	1.72	3200	3000
1 M	1.50	2.75	3200	2300
2 M	2.00	3.25	3000	2200
3 M	2.00	3.75	2900	2000
4 M	3.00	4.65	2300	1150

We also manufacture Special Props (adjustment 6.25-11.00 Mtr.) having Outer 76 OD Heavy Pipe and Inner 60.30 OD.



Heavy Duty Prop SLEEVE for 76 OD H Pipe



PUSH-PULL PROP



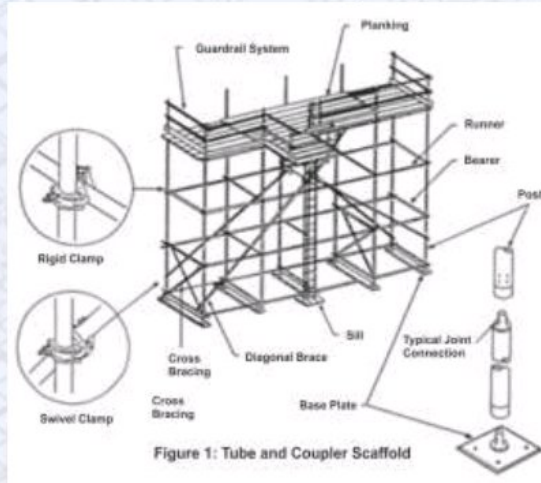
TURN-BUCKLE



TRIPOD STAND



CRIB FRAMES



This is the earliest type of metallic scaffolding. These scaffolds can be assembled in multiple directions making them the preferred option for work surfaces with irregular dimensions and/or contours.



SCAFFOLD TUBES

Size: MS Scaffold Tubes 40 NB conforming to IS-1161 or 1239. Available in random length of 4.5M to 6.0 M or of required cut lengths.

Finish: Black, Painted, Galvanized

HEAVY DUTY COUPLERS (D/F)

These are Heavy Duty Couplers manufactured using Drop Forged process. Used for connecting two scaffold tubes with each other conforming to IS-2750/BS-1139.

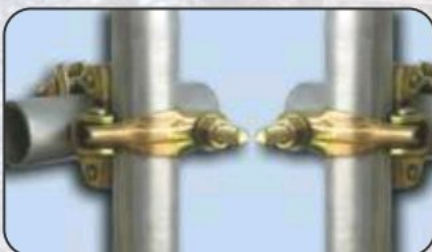
Type : Right Angle Coupler(RAC), Swivel Coupler(SWC).

Size : 40NB x 40NB, 40NB x 50NB, 50NB x 50NB

Finish : Electroplated



Also Available in Sheet Metal (Pressed Type)



RIGHT ANGLE COUPLER



SWIVEL COUPLER



BEAM CLAMP



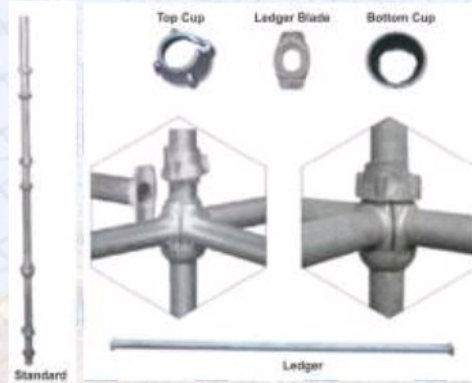
EXPANSION JOINT PIN (E.J.P.)



SLEEVE COUPLER



PUTLOG COUPLER



Single node action of unique locking makes 'cuplock' a fast, versatile & optimised system of scaffolding for construction and maintenance projects throughout the world.

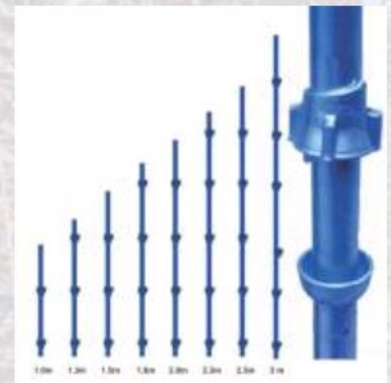


Quick fastening of Ledgers : Four Ledgers can be fasten at one time with firm clamping action of top cup making the joint rigid. Quick erection and dismantling results in time and labour saving. Versatile use in construction and maintenance projects for any type of structure i.e. straight or curved. Easy erection with no loose components, Low maintenance, Safety with proven track record.

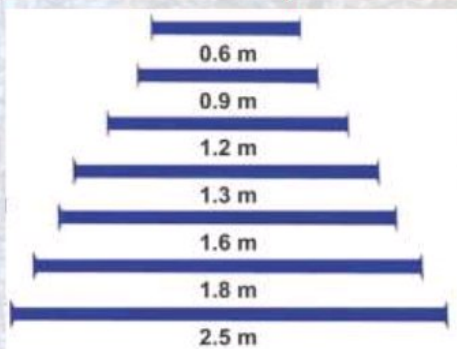
CUPLOCK STANDARD (VERTICAL)

Made out of 40 NB 'B' or 'C' Class Tubes conforming to IS:1161/1239 grade-YST 210/240 with provision of cups at 500mm / 1000mm Center to Center. Welded bottom cups are pressed from high quality steel and captive mobile top cups of malleable casting provide firm grip to ledger Blades making the connection rigid and to endure rough site handling.

Sizes: 3.0M, 2.5M, 2.3M, 2.0M, 1.8M, 1.5M, 1.3M, 1.0M, 0.5M.



CUPLOCK LEDGER (HORIZONTAL)



Made out of 40 NB 'B' or 'C' Class Tubes conforming to IS:1161/1239 grade - YST 210/240 with forged blades at the ends. Minimum projection of blades avoids damages in handling and uniform dimension makes the cup joint rigid.

Size: 2.5M, 2.0M, 1.8M, 1.5M, 1.3M, 1.25M, 1.0M, 0.9M, 0.7M, 0.6M, 0.5M.

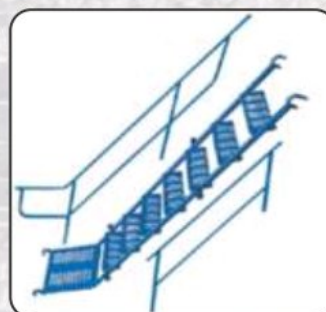
OTHER ACCESSORIES :



STEEL BATTENS



CANTILEVER FRAME



STAIRCASE



SPIGOT PIN



Consists of welded frames, with 48.3 OD verticals, braced together with scissor type cross braces by means of spring clips. Diagonal bracing is provided in alternate bays for scaffold height up to 20m and in all bays for greater heights. "H" Frame with 60.3 OD Verticals are available for staging of heavier structures. Standard Sizes : 2000x1250mm, 1500x1250mm, 1000x1250mm

STANDARD H FRAME

A high quality range of Scaffolding Frames-Standard H Frames is being offered to the clients in different specifications. These products have rigid welded frame of horizontal and vertical pipes. Further, these pipes are interconnected by scissor type cross braces by the help of pins and spring clips.

WALK THROUGH FRAMES

We provide a high quality range of Walk Through Frames. The range of Walk through Frames is known for providing an easy access to human mobilization, with clear head room.

ACCESSORIES



LOCKING PIN



FIXED BASE PLATE

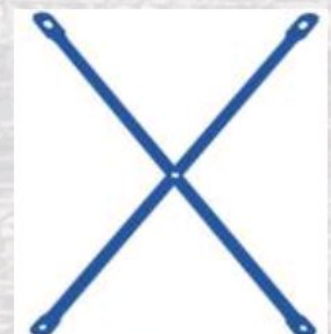


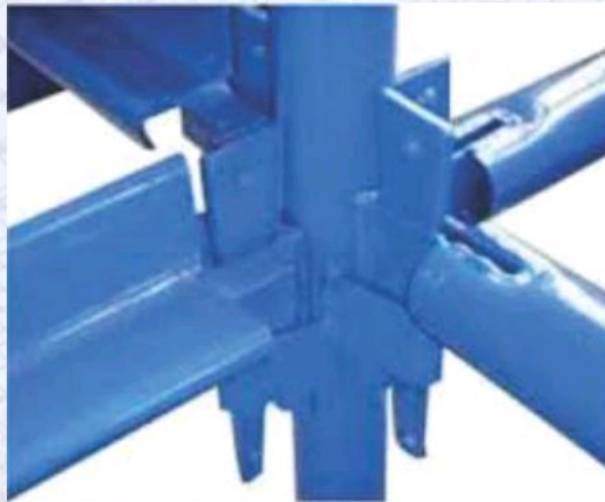
ADJ. BASE PLATE

CROSS BRACING

Sizes of Cross Braces

Sr. No	Size (AXB) In mm	Spacing In mm	Length (L) In mm	Pipe Dia	Self Wt. In kgs.
1	2500x1500	2500	2950	25NB 20NB	9.25 7.50
2	2000x1500	2000	2550	25NB 20NB	8.00 6.45
3	1250x1500	1250	2000	25NB 20NB	6.35 5.15





QUICKWEDGE STANDARD

Quickwedge Standards / Verticals form the support and are made from Standard Scaffold Tubes of 48.3 x 4 mm thick. With the latest innovations, they are also available in 48.3 x 3.25mm in both grade 50 & 40 C as per BS: 4360. They have a series of "V" pressed welded at nominal 500 mm on the tube to provide a location for ledger and transoms. They are also available with integral wedge spigots or as open ended.



QUICKWEDGE LEDGER



These items are made from tube with pressed wedge-fixing device at each ends. These are used to Tie the standards longitudinally. On the inside of the scaffold they are used at platform level and on the outside as a guardrail.

QUICKWEDGE TRANSOM

These are made out of 50 x 50 x 5/4mm Angle, joined back to back with Flange Type extensions on both sides which provides support for working platforms with Battens. These are engaged with "V" pressing on the standards



TRANSOM



DIAGONAL BRACE



HOPUP BRACKET



RINGLOCK STANDARD

Ringlock Standard/Vertical are suitable for all types of formworks. These ringlocks are constructed with ring joints welded at every 500mm or 1000mm intervals.

Technical Specification :

Lenght (Meter) : 0.5, 1.0, 1.5, 2.0, 2.5, 3.0



RINGLOCK LEDGER



Ringlock Ledgers are Horizontal members of scaffolding which are used to connect the two Vertical members at fixed distance. These are available in different sizes.

Technical Specification:

Lenght (Meter) : 0.5, 0.7, 1.0, 1.5, 2.0, 2.5, 3.0

RINGLOCK DIAGONAL BRACE

Ringlock Brace are Diagonal members of scaffolding which are used to connect the Vertical members diagonally. These are available in different sizes.

Technical Specification:

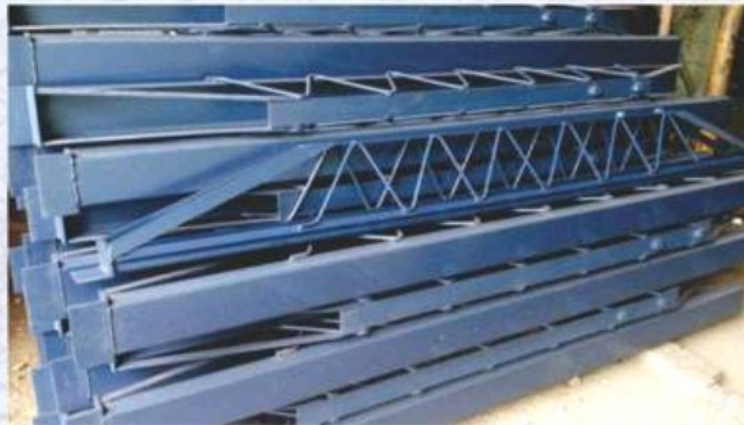
Lenght (Meter) : Lenght (Meter) : 2.0 x 1.0, 1.5 x 1.0, 2.0 x 1.1, 2.0 x 1.5



RINGLOCK STARTER



This Ringlock starter is also known as Base Collar which is offered with rosette in conjunction and height-adjustable surface plates for constructing the scaffolding base. The initial section is placed in the base plate and then the vertical section is placed.



Having exceptionally high load bearing capacity for its low weight. Completely eliminates intermediate propping to support shuttering plate. Hence, reducing maintenance cost as well as time for easy erection.

Adjustable Spans are made out of 14g/12g Sheet, 10mm/14mm M.S. Round and 40 X 40 mm M.S. Tee consists of an outer and an inner member

ADJUSTABLE TELESCOPIC SPAN			PERMISSIBLE CLEAR SPANS FOR SPAN SPACING					
Size	Range Min. m	Range Max. m	SLAB THICKNESS	TOTAL LOAD (Kg/m ²)	600 mm mm	800 mm mm	900 mm mm	1200 mm mm
ESO + ESI	1.75	2.70	100	420	5690	5000	4650	4010
ESO + SI	2.35	3.40	125	480	5330	4650	4340	3750
SO + SI	2.46	4.15	150	540	5000	4350	4090	3560
SO + LI	3.05	4.75	200	660	4520	3950	3680	3200
LO + SI	3.15	4.90	250	780	4140	3650	3380	2840
LO + LI	3.15	5.50	300	900	3730	3400	3150	2490

We also Deals in:



WALL FORM SHUTTERING PANEL



INTERNAL/EXTERNAL CORNER SHUTTERING PANEL



HAUNCH PANEL



COLUMN CLAMP



COLUMN/PIER SHUTTER



"PIER CAP"



WALLER

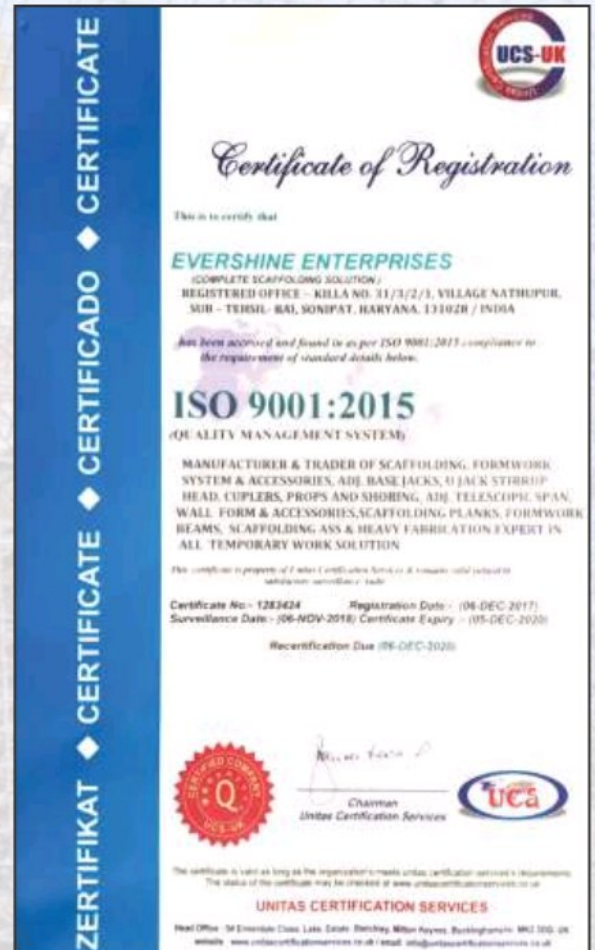
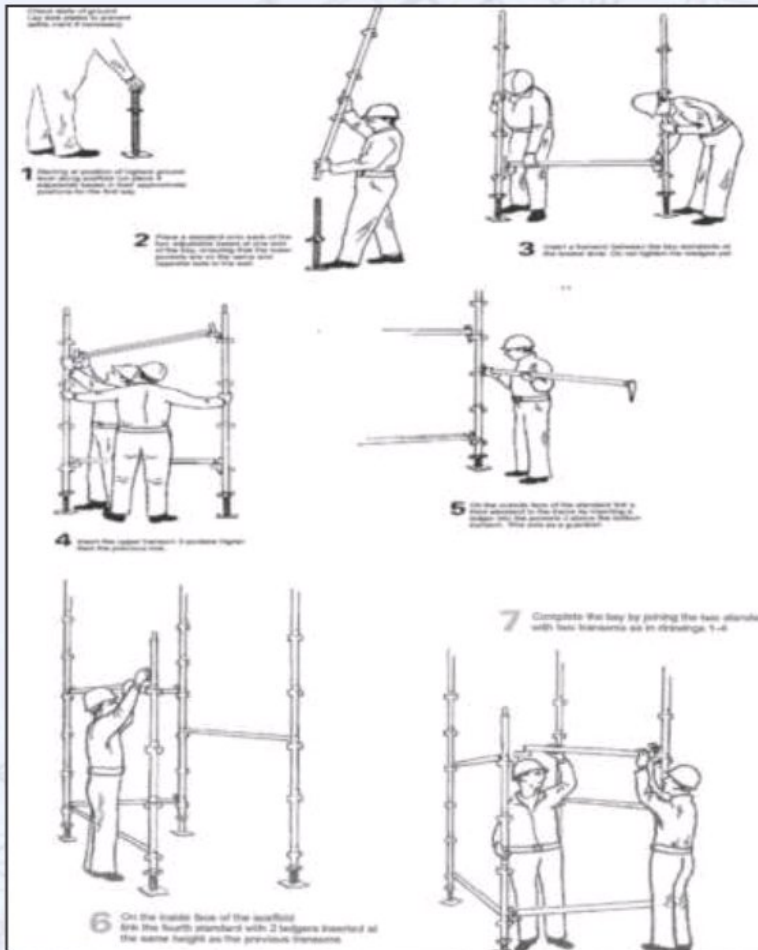


SINGLE CLAMP

SCAFFOLDING ERECTION PROCEDURE



**EVERSHINE
ENTERPRISES**
COMPLETE SCAFFOLDING SOLUTION



OUR CLIENT



WE ALSO DEALS IN



OTHER FORMWORK ACCESSORIES



SAFETY EQUIPMENTS



OSG@94162-76543 (Vol.11 Sep.19)



EVERSHINE ENTERPRISES

Works: Killa No.31/3/2/1, Village Nathupur,

Sub. Tehsil Rai, Sonipat, Haryana- 131028

Ph.: +91-0130-6621082, +91-9810356345

E-mail: Info@evershineenterprises.in, sales@evershineenterprises.in
evershineharyana@gmail.com | Website: www.evershineenterprises.in

☎ 9810356345, sales@evershineenterprises.in, evershineharyana@gmail.com | www.evershineenterprises.in